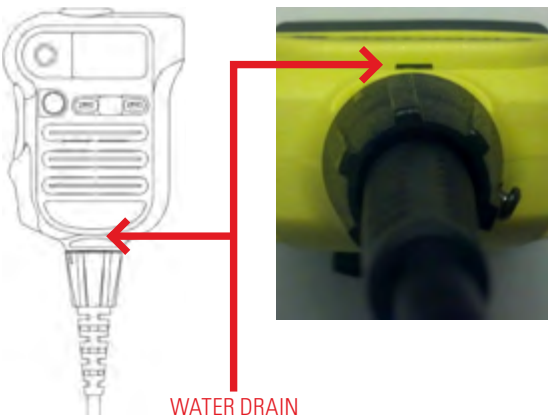


BEST PRACTICES FOR XE RSM



FOR THE BEST PERFORMANCE IN EXTREME ENVIRONMENTS, ALWAYS FOLLOW 3 SIMPLE RULES.

1. ALWAYS WEAR ORANGE BUTTON UP FOR BEST WATER DRAINAGE



YES



YES



YES



NO

2. ALWAYS TALK TO CLOSEST MIC FOR BEST VOICE QUALITY

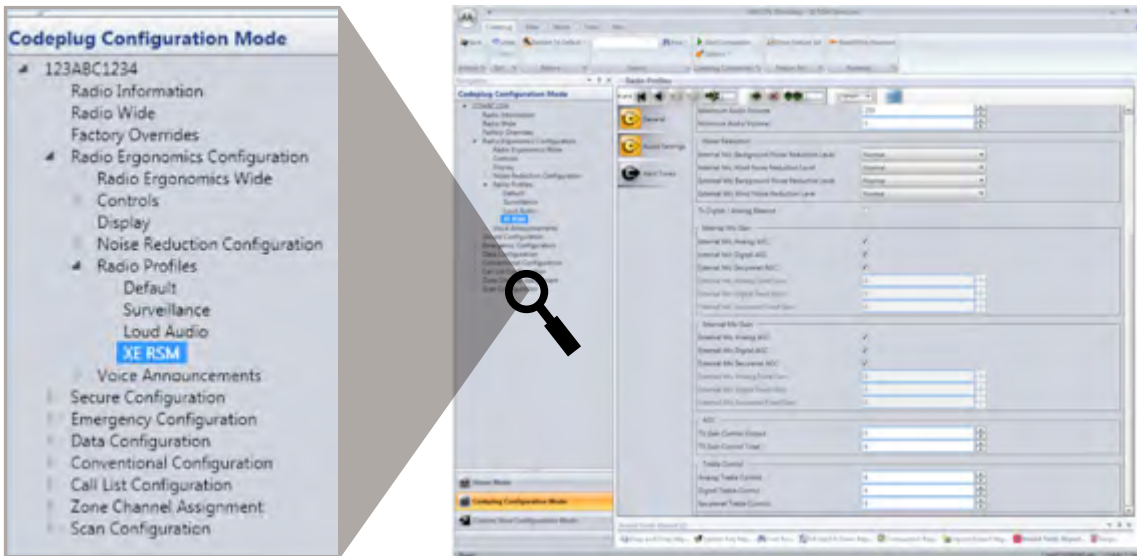


3. ALWAYS SHAKE TO CLEAR WATER AND THEN TALK



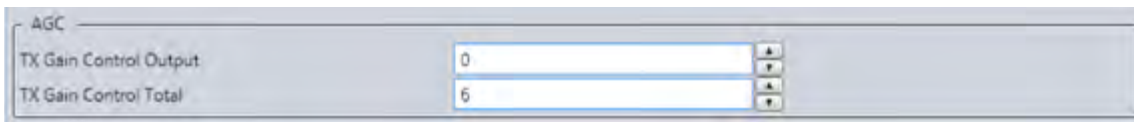
Two or three brisk vertical shakes will cause water to drain faster.

RADIO PROFILE CONFIGURATION ENHANCEMENT



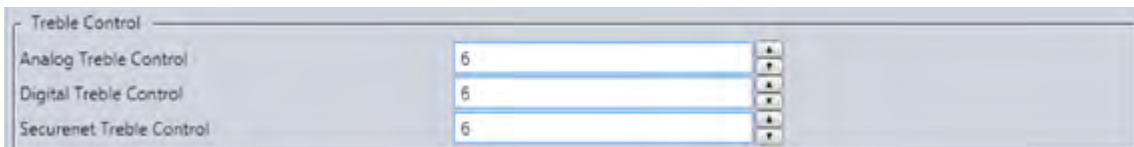
Improve communication intelligibility with two APX Radio Profile Audio Setting CPS (Customer Programming Software) changes.

1. Enable **TRANSMIT** External Mic AGC to optimize XE RSM microphone signal level.



Set 'TX Gain Control Output' to 0, 'TX Gain Control Total' to 6.

2. Boost **RECEIVE** Treble Frequency to add crispness to speaker signal for better intelligibility.



Set 'Treble Control' to 6

Motorola Solutions, Inc.
1301 East Algonquin Road, Schaumburg, Illinois 60196, U.S.A.
800-367-2346
motorolasolutions.com

MOTOROLA, MOTO, MOTOROLA SOLUTIONS and the Stylized M Logo are trademarks or registered trademarks of Motorola Trademark Holdings, LLC and are used under license. All other trademarks are the property of their respective owners. © 2013 Motorola Solutions, Inc. All rights reserved.

